



*"Wireless Solutions for High-Tech Industries"*

## M15RCU M15RCUFAA

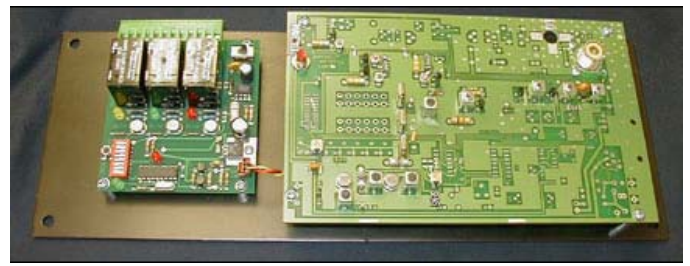
The model designator M15RCU refers a general class of Radio Control Units. Mentor Radio manufacturers a wide family of products serving a variety of radio control needs. Mentor Radio builds three basic types of radio control units.

- aviation band radio control units
- marine band radio control units
- Federal Aviation Administration (FAA) certified Airfield Runway Light Controllers. (M15RCUFAA)

The aviation type radio control units are also known as Runway Light Controllers. They allow pilots flying into remote location airfields or any airfield where there is not 24 hour tower operators to simply tune their radios to the airfield RLC frequency and by simply clicking their microphone 3, 5 or 7 times, pilots can turn on the airfield runway lights from the aircraft. Operation is dipswitch configurable Dipswitch settings allow for various configurations. Jumpers on the controller board also extend the usefulness and configuration options to other applications as well. For aviation uses the receiver frequency is in the range 118.000 MHz to 136.975 MHz, but the unit is also available to operate in the vhf "high band" (150-170 MHz) for marine and other applications.



Radio control installed in NEMA 4 box.



M15RCU-24-A

**View our catalog online at [www.mentorradio.com](http://www.mentorradio.com)**

**19601 Five Points Road, Cleveland, Ohio 44135**

Phone: 216-265-2315 • Fax: 216-267-2915



*"Wireless Solutions for High-Tech Industries"*

## **M15RCU M15RCUFAA**

### Options:

Dip Switch selectable

- Window Timer: 3 or 5 seconds
- Timeout Interval: 1,3, 5, 10, 15, 20, 30, or 60 minute
- Relays mutually exclusive

### Installation Options:

For Aviation Version:

1. Indoors without NEMA enclosure.
2. Outside with Fiberglass NEMA 4 weatherproof enclosure
3. Outside with Steel NEMA 4 enclosure.
4. Antenna (either a whip or base style antenna)
5. lightning protection for the antenna.
6. connect to 115VAC, 12 or 24VDC (battery or solar panel power)

For Marine Version: All the same options are available as for the aviation version except that they operate in the marine VHF band.

For M15RCUFAA: This unit comes preconfigured per FAA requirements as specified in FAA AC150/5345-49B for "Specification L-854, Radio Control Equipment" certified under the Federal Aviation Administration Airport Lightning and Equipment Certification Program (ALECP) per AC 150/5345-53. . Unit includes lightning protectors for both the antenna and the AC power input line along with a steel NEMA 4 enclosure, DIN Rail mounted relay line fuses with indicators, a base style antenna with 15M coax cable.

The complete assembly contains the two printed circuit board assemblies (M15 receiver and the controller) mounted on a 5.5" x 15" black anodized aluminum plate, and can be mounted in a standard NEMA enclosure.

**View our catalog online at [www.mentorradio.com](http://www.mentorradio.com)**

**19601 Five Points Road, Cleveland, Ohio 44135**  
Phone: 216-265-2315 • Fax: 216-267-2915



*"Wireless Solutions for High-Tech Industries"*

## **M15RCU M15RCUFAA**

### Specifications:

- Supply voltage:
  1. standard version: 11-15 vdc (300 ma) (115 vac 60 Hz wall adapter included)
  2. low current solar cell version: 9-30 vdc (current varies with voltage)
- Temperature range: -30° C to +60° C
- Receiver sensitivity: adjustable from 3uv to 50 uv
- Relay contact rating: 5 amps.
- Also available in NEMA 4 environmentally sealed box.
- Includes a built in test button to verify proper operation of the unit without using a radio.
- A reset button is provided on the controller to allow resetting the relays before timeout period is expired.
- Display LEDs for power, window, and relay state.

Both the aviation and marine band products can be configured to operate from either AC or DC power sources.

**View our catalog online at [www.mentorradiocom](http://www.mentorradiocom)**

**19601 Five Points Road, Cleveland, Ohio 44135**  
Phone: 216-265-2315 • Fax: 216-267-2915